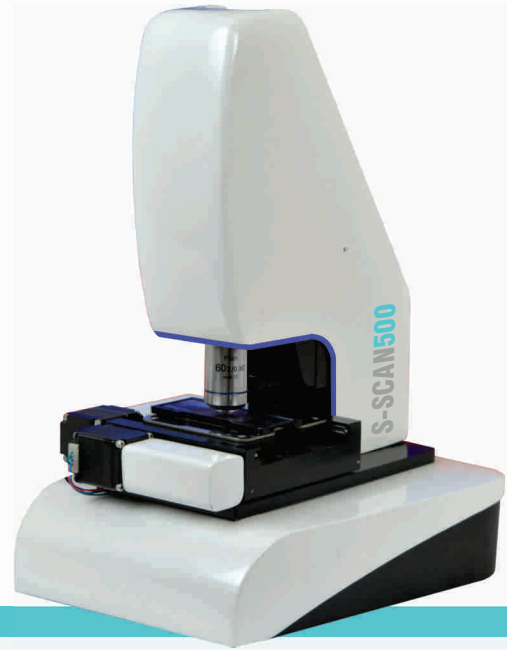


## OPTICA DM50 Digital Microscope for Pathology

Auto-microscope model : PC-BM-AM01 is an automated digital microscopy system developed for the acquisition of high resolution images in brightfield observation. The motorized XY sample stage helps the user to scan a particular sample area automatically and the autofocus system will find the best focused image in each frame before saving it to the pc for further analysis.

Transmitted warm white LED illumination along with high quality Plan achromatic microscope objective provides uniform illumination of the entire field of view. The system is equipped with 5MP USB3.0 CMOS camera for the fast acquisition of the images and a 60X Plan objective with 0.85NA for high resolution images. System with user specified microscope objective is also available.

A complete user friendly image acquisition software is provided along with the system. The user can easily control the scanning operation and the camera properties through this software.



[www.precore.in](http://www.precore.in)  
[contact@precore.in](mailto:contact@precore.in)  
 +91 9744122269

### Specifications:-

Optical system : Infinity corrected  
 Observation method : Brightfield  
 Illumination : Transmitted,  
 Illumination source : High Bright warm White LED,  
 Intensity Adjustable  
 Microscope objective : Plan Achromatic 60X, 0.85 NA  
 Focusing : Motorized with Autofocusing  
 Image acquisition : 100 images / 8 Minutes  
 Software : AM\_V01

### Camera Details

Sensor : CMOS, Color, 5Mp  
 Optical format : 1/2.5"  
 Active imaging size : 5.70mm x 4.28mm (7.13mm diagonal)  
 Active pixels : 2592 H x 1944 V  
 Pixel size : 2.2um x 2.2um  
 Frame rate : 14 fps @ full resolution, 45 fps @ 1024x768  
 Sensitivity : 1.76V/Lux-sec  
 Exposure time : 109us ~ 3000ms  
 Spectral range : 380-650nm  
 SNR : 38.5dB  
 Dynamic range : 67.7dB  
 Shutter : Electronic rolling shutter  
 Data interface : USB3.0  
 Software interface : TWAIN\DirectShow  
 Operating mode : Continuous output  
 Data format : 8 Bit/12 Bit RAW  
 Picture format : JPEG/BMP/PNG/RAW

### XY sample stage - Motorized

Travel : 18mm x 18mm  
 Drive : Stepper Motor  
 Resolution : 5 micron  
 Accuracy : 5 micron

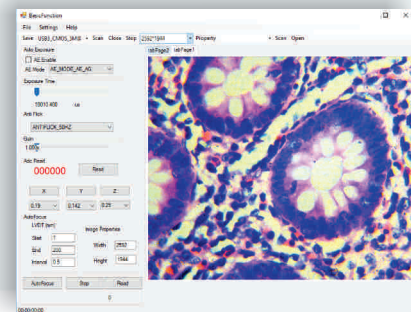


Fig. Auto-Microscope Analyte Software Window



## PRODUCT APPLICATIONS

Applications include biological cell imaging, cell counting, malaria diagnosis, cancer cell imaging etc.

